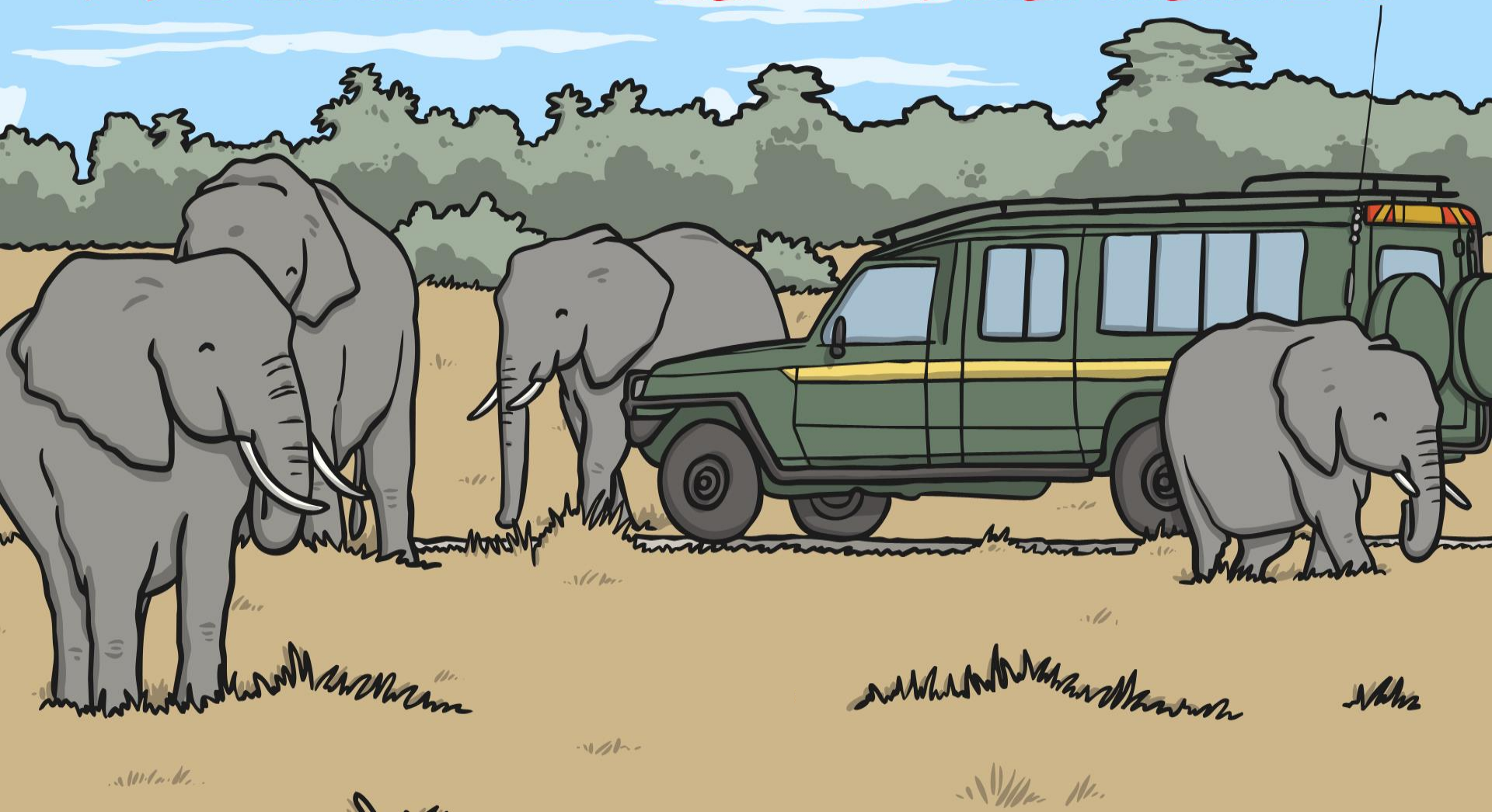


# National Parks and Wonderful Wildlife



# Aim

- I can understand what a national park is.
- I can use compass directions to describe a route.

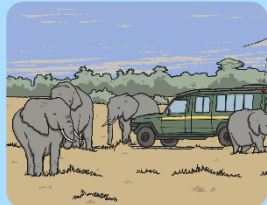
# Success Criteria

- I can name three (or more) key features of a national park.
- I can explain how a national park is different to a game reserve.
- I can tell my partner why people visit Kenya on holiday.
- I can use N, E, S and W correctly to move around a map.
- I can draw my own national park or reserve including the key features (key, compass, title, symbols, safari route).

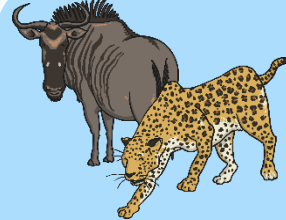
# Key Words



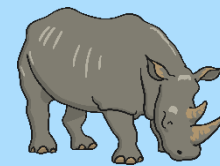
National Park



game reserve



wildlife



endangered species

habitat



safari



tourism



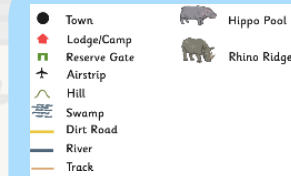
tourists

holiday

protect



map



key

# Use the map to recap previous learning



# National Parks and Game Reserves

- Kenya has over 50 national parks and game reserves across the country.
- Within the parks and reserves are many different types of wildlife and habitats, such as wetlands, grasslands, forests, savannah and marine.
- A national park is a protected area of land where only tourism and research is allowed by humans. No humans live in national parks.
- The **Tsavo West** and **Tsavo East** National Parks are the largest in Kenya.



Photo courtesy of ninara and mckaysavage (@flickr.com) - granted under creative commons licence - attribution

# National Parks and Game Reserves

- A **game reserve** is still a protected area of land, but it allows humans to live there and to carry out other activities such as fishing, road building, mining and gathering wood.
- The most popular reserve in Kenya is the **Maasai Mara Reserve**, which can be found in the south west of the country. It is named in honour of the **Maasai tribe** who have lived in the area.



Photo courtesy of wwarby and luigig (@flickr.com) - granted under creative commons licence - attribution

# National Parks and Game Reserves

- The **Maasai Mara National Reserve** is famous world over for the large amount of wildlife including all members of the 'Big Five' which live there.
- The name 'Mara' means 'spotted', which is what the land looks like from a distance with trees, clouds and grass!



Photo courtesy of ninara and [www.beontheroad.com](http://www.beontheroad.com) (@flickr.com) - granted under creative commons licence - attribution



# National Parks and Game Reserves



Photo courtesy of ninara (@flickr.com) - granted under creative commons licence - attribution



Photo courtesy of ninara (@flickr.com) - granted under creative commons licence - attribution



Photo courtesy of wwaby (@flickr.com) - granted under creative commons licence - attribution



Photo courtesy of dolapo (@flickr.com) - granted under creative commons licence - attribution



Photo courtesy of ninara (@flickr.com) - granted under creative commons licence - attribution



Photo courtesy of Anup Shah (@flickr.com) - granted under creative commons licence - attribution



Photo courtesy of joxeankoret (@flickr.com) - granted under creative commons licence - attribution



Photo courtesy of joxeankoret (@flickr.com) - granted under creative commons licence - attribution



Photo courtesy of Dennis.Mainuu (@flickr.com) - granted under creative commons licence - attribution



Photo courtesy of Anup Shah (@flickr.com) - granted under creative commons licence - attribution



Photo courtesy of mauxditty (@flickr.com) - granted under creative commons licence - attribution



Photo courtesy of [www.beontheroad.com](http://www.beontheroad.com) (@flickr.com) - granted under creative commons licence - attribution

# Sensational Safari

Where do people go on holiday?

Where have you been on holiday?

What do people do on holidays?

What are tourists?



# Sensational Safari

Millions of tourists visit the Maasai reserve each year to see the endless savannah and to go on safari to look at the amazing wildlife such as elephants, lions, cheetahs, giraffes, zebras, hippos, rhinos and many more!

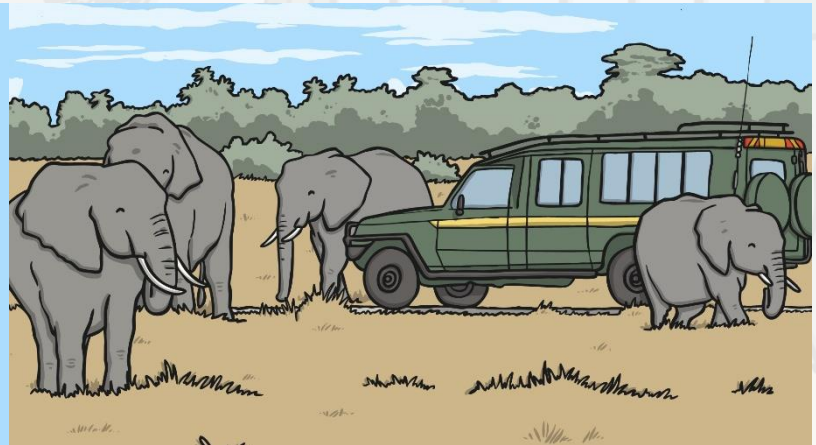
**Watch this short video about the Maasai reserve.**



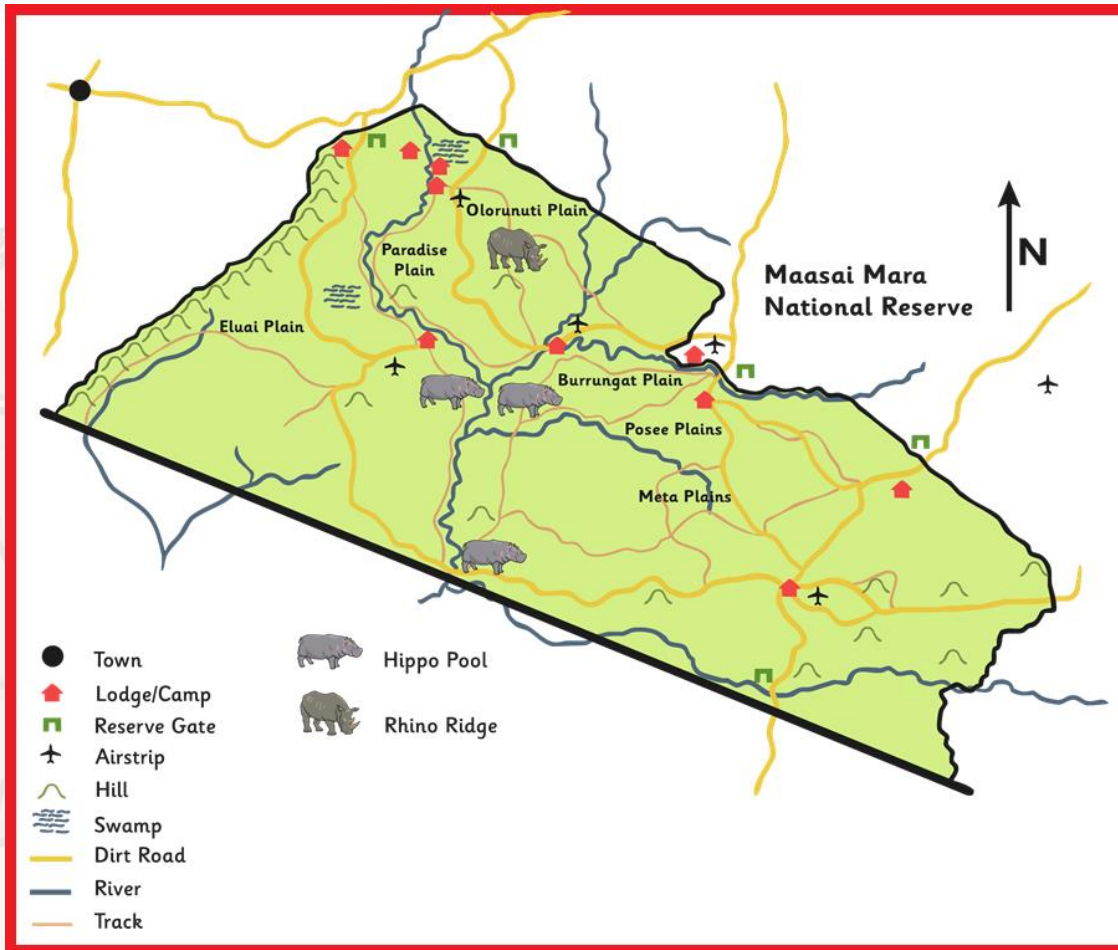
What type of holidays did people go on in the video clip?

Why do people go on holiday?

Why do you think people visit Kenya?



# My National Park



What is located the north of the reserve?

In what direction would I need to travel to reach Rhino Ridge?

What symbol shows a river?

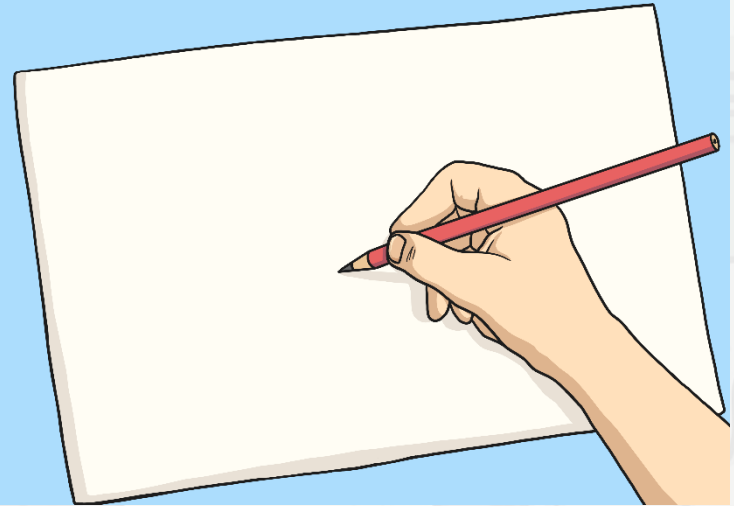
What symbol shows a swamp?

Can you spot a gate?

# My National Park - Your Map

**Imagine you are going to create your own national park or game reserve in Kenya!**

Decide which you will design a map for and follow your checklist to make sure you have included all the key features of a park or reserve.



**Challenge:** Can you draw a **route** on your map to show where a safari around the park or reserve could take place?