



Nurturing Nurses
Significant People



Aim

- I can explain what makes a person significant

Success Criteria

- I can explain why a person is significant to me
- I can identify some significant people
- I can explain why a person from history is significant

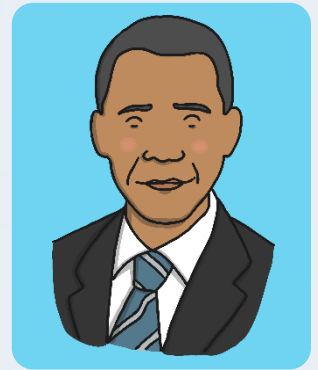
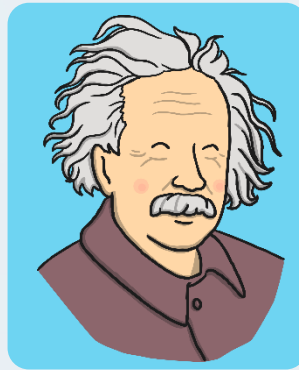
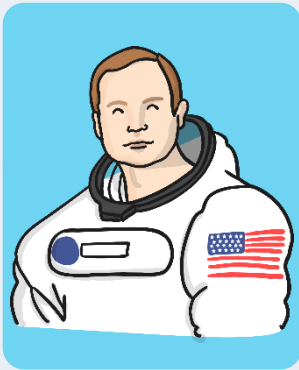
What does significant
mean?

What does significant mean?

- Important and deserving of attention.

Significant People

What makes people significant?



Look at these significant people. You may recognise some and not others. What makes them special?

Significant People

What makes people significant?

Here is a list of reasons why people might become important. There could be more than one reason!



If he or she:

1. Changed *events* at the time they lived.
2. Improved lots of people's lives or made them worse.
3. Changed people's ideas.
4. Had a long lasting *impact* on their country or the world.
5. Had been a really good or very bad *example* to other people on how to live or behave.

Significant People

Who are the significant people in our lives?



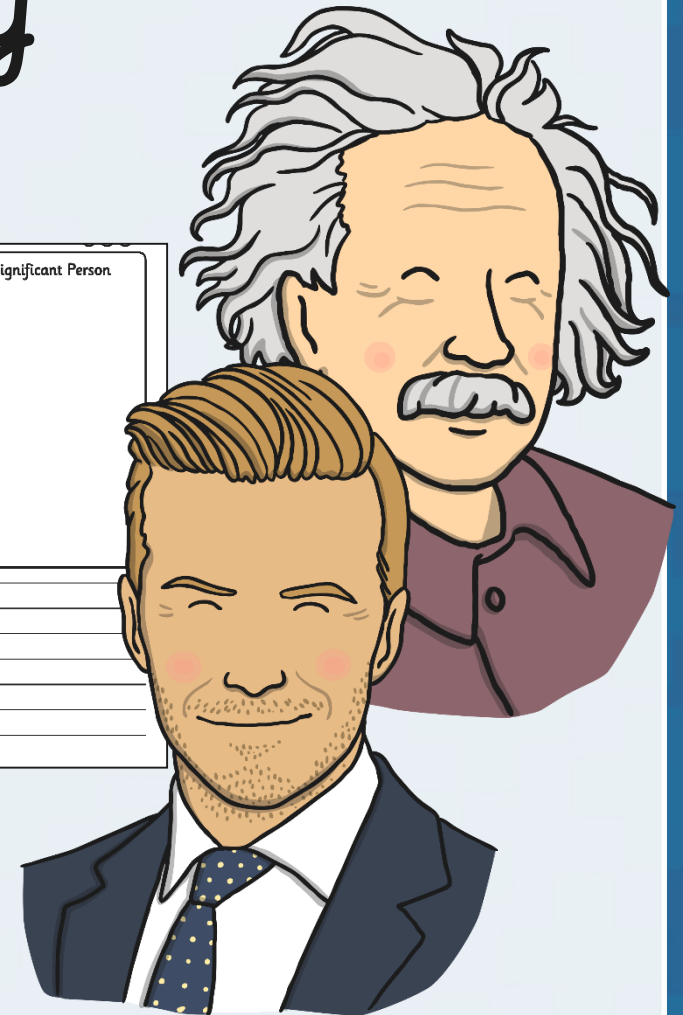
Think about someone in your life who is significant. They might not be famous but they are special to you. Draw a picture of them and write why they are significant to you. Do this on the left side of your worksheet.

My Significant Person	My Significant Person

Significant People from History

On the other side of the sheet think about someone from history who is significant. Draw a picture and write about what makes them significant.

My Significant Person	My Significant Person
_____	_____
_____	_____
_____	_____
_____	_____
_____	_____



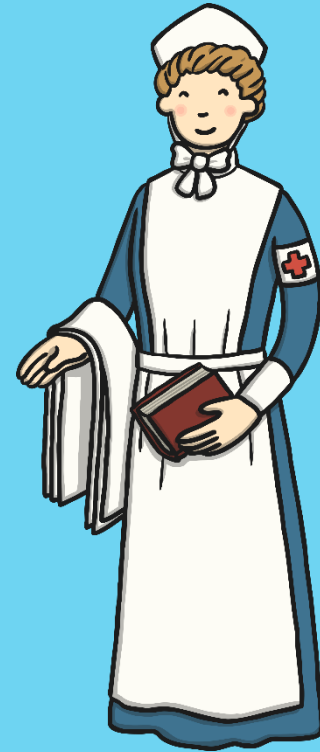
Significant Nurses



Florence
Nightingale



Mary Seacole



Edith Cavell

We will soon be using our knowledge of the word significant to learn about nurses.