

Food Chains

STAGE 1

Food chains are very important. An animal or plant becomes part of a food chain when they eat something. They might also be eaten themselves.

Owls are at the top of this food chain. They eat the snakes. They might sometimes eat mice as well. Nothing eats owls.

I: Why are owls at the top of the chain?

S: Which animals are next after the corn?

The mice eat the corn. They are next on the food chain.

R: What do mice eat?

E: Why has the author added a Did You Know?

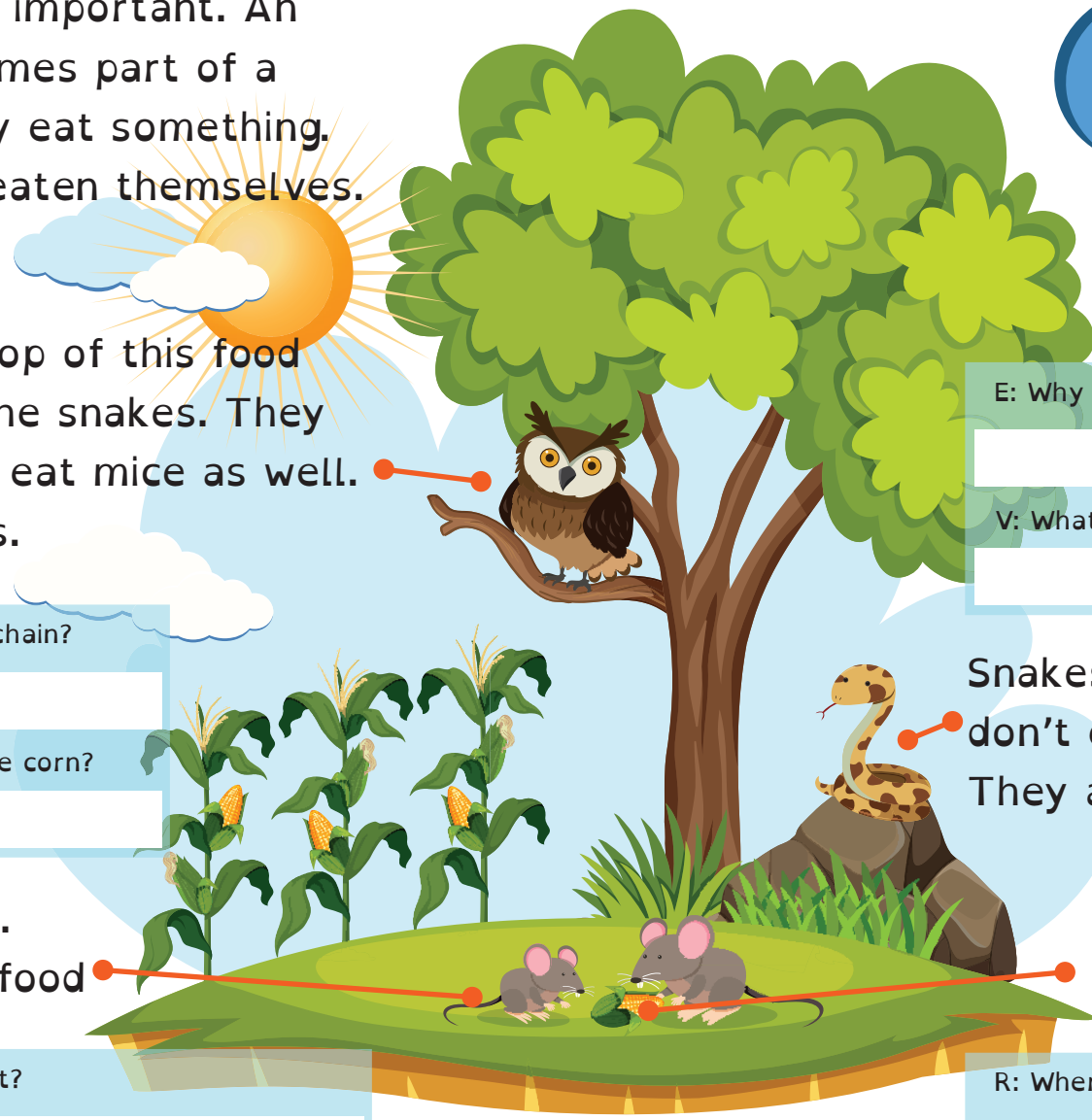
V: What is a carnivore?

Snakes eat the mice. They don't eat plants or vegetables. They are carnivores.

Corn is at the bottom of this food chain. It gets its food from the soil.

R: Where does corn get its food from?

Did You Know?
The entire food chain can become extinct if just one part of it is endangered.



Answers

I: Nothing eats it

S: Mice

E: To add an interesting fact

V: An animal that doesn't eat plants/vegetables

R: Corn

R: The soil