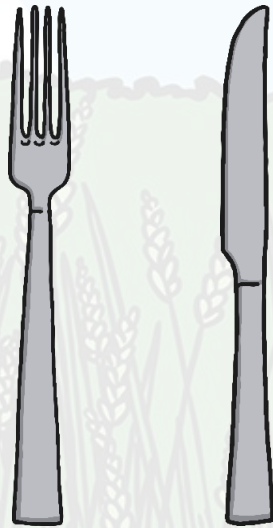


Carnivores, Herbivores and Omnivores



We can put animals into groups by looking at what they eat!

The groups we can put them into are either carnivores, herbivores or omnivores.





Herbivores



These are animals that only eat plants.

These can be flowers, fruit, nuts, grass or even wood.

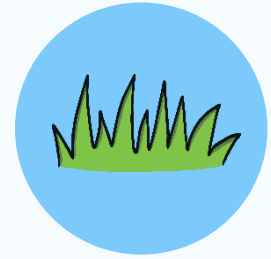
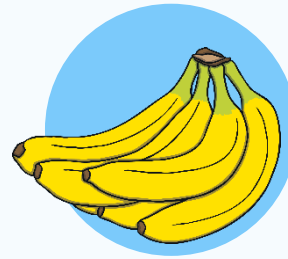
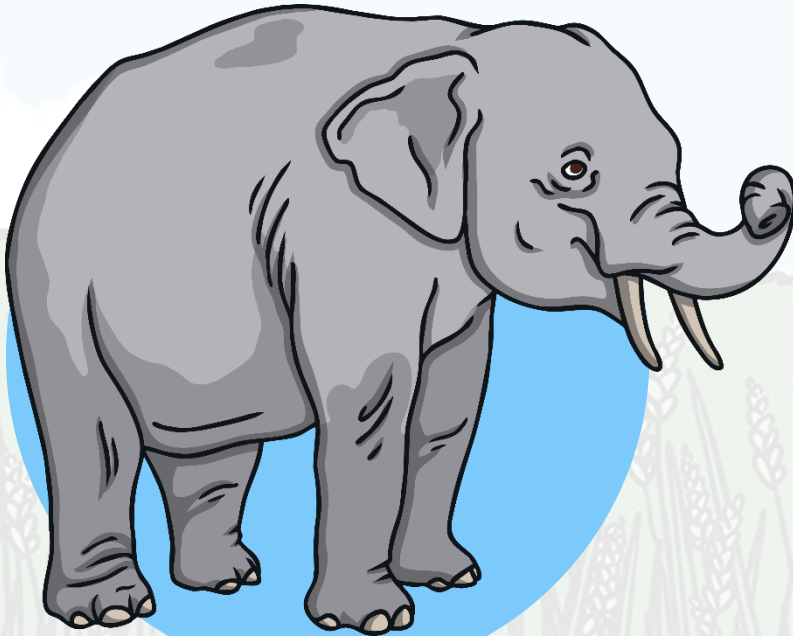


What do I like to eat?



Elephants are herbivores.

Which of these can they not eat?



You could remember the word:

Herbivore

by remembering that **herbs** are types of **plants**.

Carnivores

These are animals that only eat **meat**. They eat other animals. Usually, these animals have to catch other animals to eat.

What do
I like to
eat?



Carnivores eat...

mammals



fish



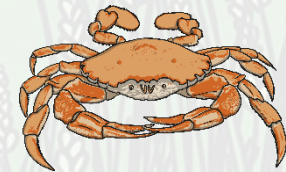
birds



insects



and other animals:



Omnivores

These are animals that eat *meat* and *plants*.

These are animals like chickens that can eat seeds and worms.



Omnivores have a good way of staying alive. If they cannot find meat, omnivores can eat plants instead.

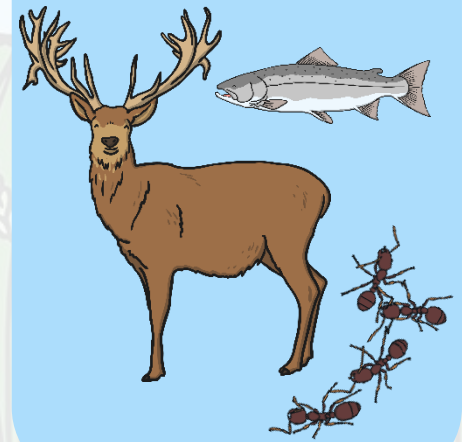
Omnivores come in all shapes and sizes!



Grizzly bears eat seeds, berries and grass.

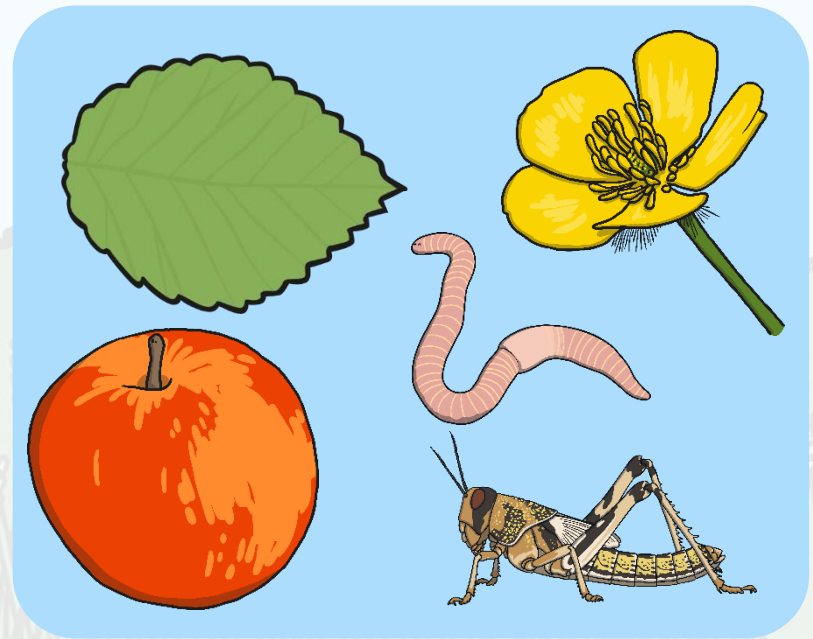
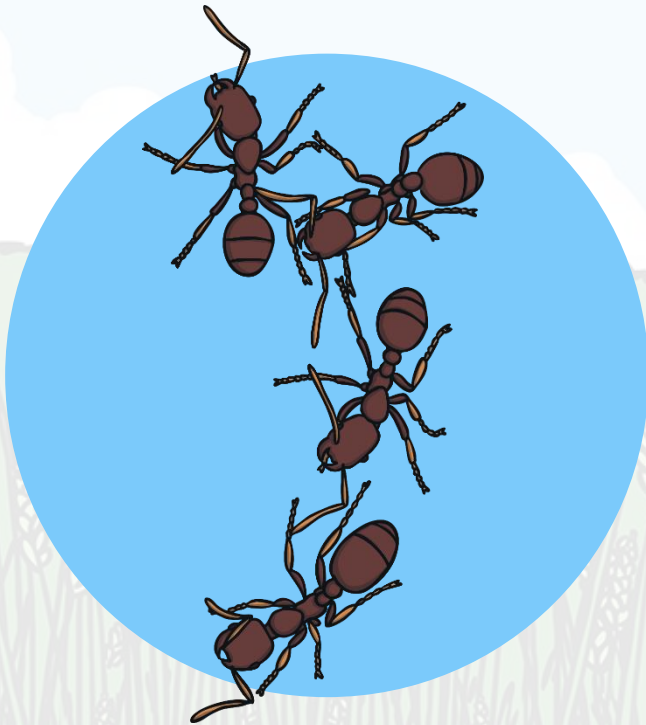


They also eat deer, fish and insects.



Ants are tiny omnivores.

Most ants eat a mix of plants and meat. This might include leaves, nectar and fruit, as well as insects and dead animals.

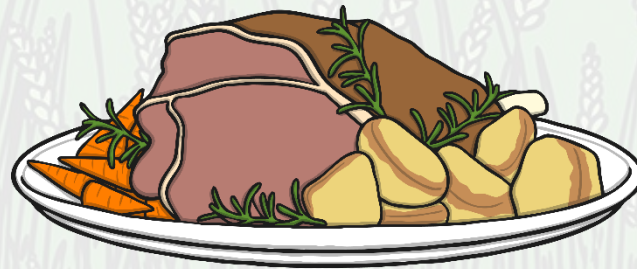


You could remember the word

Omnivore

by remembering that omnivores eat everything
with an

om nom nom nom!



What about Humans?

Do you think humans are carnivores, herbivores or omnivores?

What did you eat yesterday?

Humans are able to eat meat and plants.

Some people eat only plants, but most humans have both plants and meat in their diet.

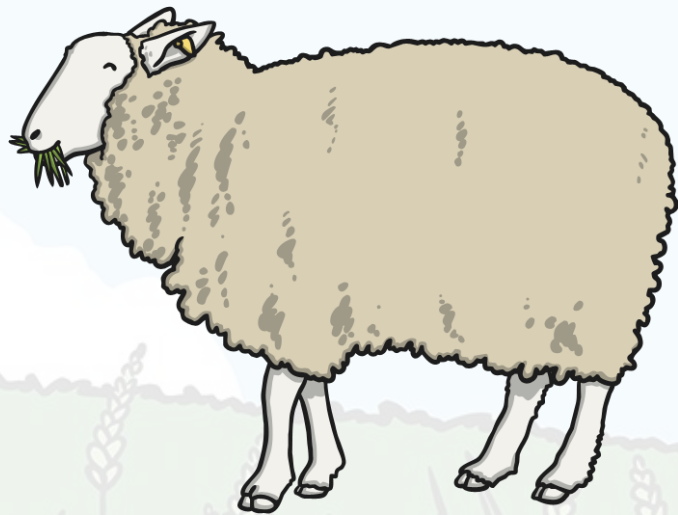
This makes humans omnivores.



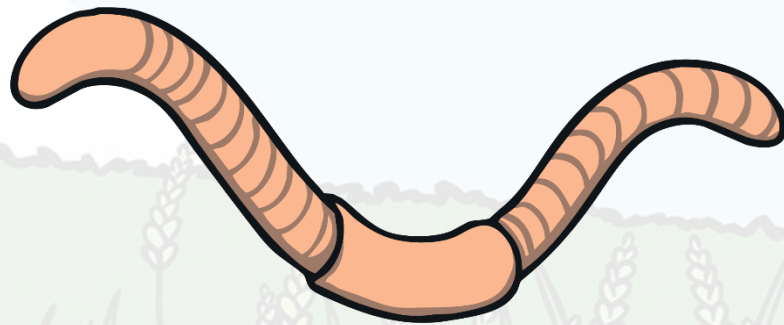
Activity

Have a look at these animals and talk with an adult about what they eat.

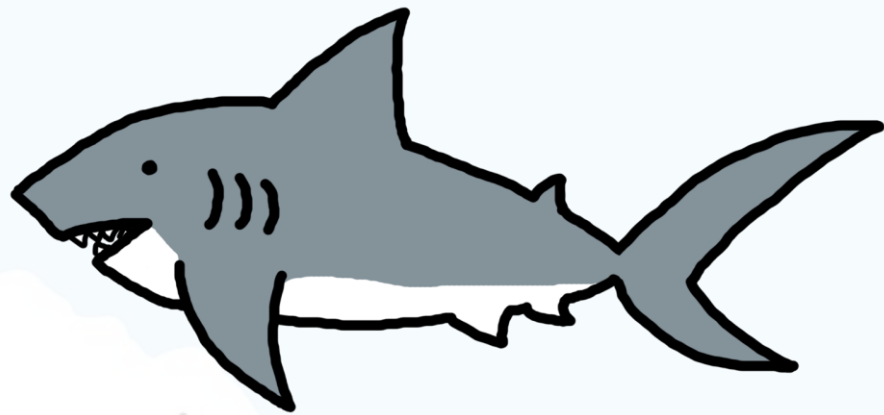
We need to understand what animals eat before putting them into groups.













Activity

Now you can start your work. Have a look at the venn diagram. It has labels on it too.

Choose an animal and write it in the correct group. You can also cut and stick the pictures in the correct group. Think carefully about what it eats and the group it belongs to.

twinkl